



# Procon Engineering

(A Division of National Oilwell Varco UK Limited)



## Type EP20-200 & 201 Airport Baggage Weighing Indicators

**Stainless steel bezel –flush mount fitting**

**20mm, 6 digit LCD Display with LED backlight**

**Full digital set-up and calibration**

**Scale electronics integrated into operator display**

**Heavy bag detection with relay output**

**Totaliser and bag counter for up to 99 bags as standard**

**Highly compact profile minimising desk intrusion**

**Digital inputs allow use of remote switches**

### Operator and Passenger Displays

The Weighing baggage check-in scales, offered by Procon Engineering, utilises trade approved electronics, displays and weigh platforms. These can be integrated into baggage handling systems or supplied as stand alone units.

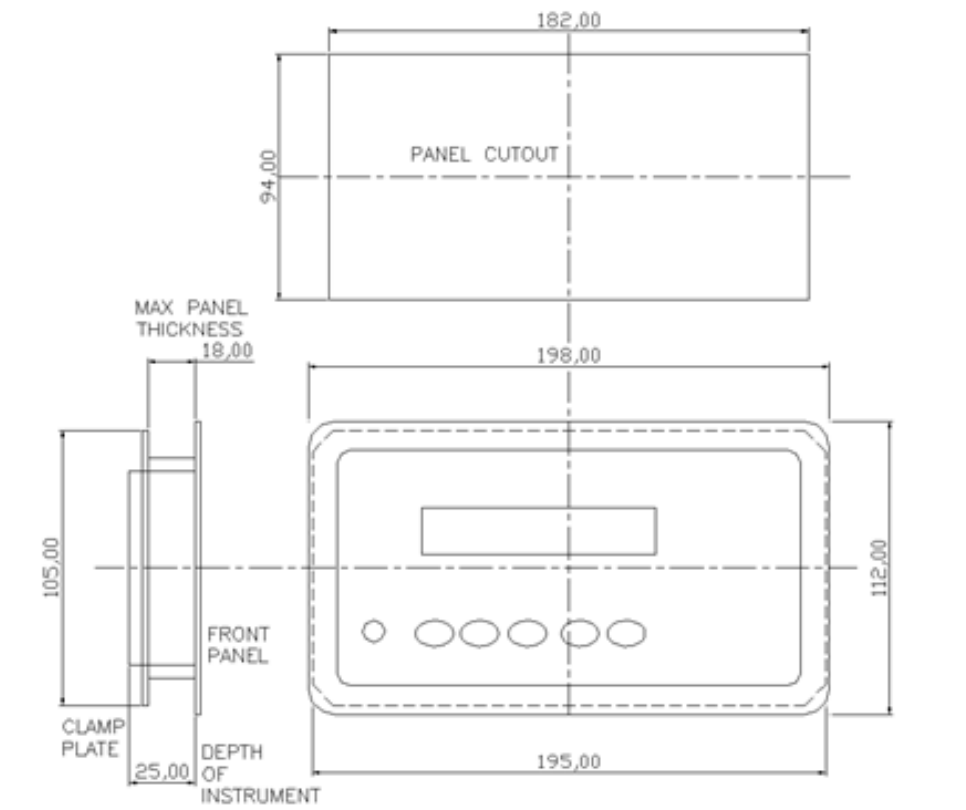
The EP20-200 & 201 series represents weighing electronics utilising a highly integrated design which incorporates the weighing electronics within the operator display. For those desks that require a separate passenger display this is achieved with a simple matching display.

The EP20-200 range of electronics and displays offer high visibility back lit LCD readouts with all other normal airport requirements built in as standard.

# Type EP20-200 & 201 Airport Baggage Weighing Indicators

## Technical Specification Sheet

<b>PERFORMANCE</b>	
Resolution	Up to 30,000 divisions, minimum of .025 $\mu$ V/division
Input Range	0.1 m V/V to 3.0m V/V full scale
Excitation	5 volts for up to 4 x 250 ohm load cells
A/D Type	24 bit Sigma Delta with 8,388,608 internal counts
Operating Environment	Temperature: -10°C to +50°C ambient
<b>DIGITAL</b>	
Display	LCD – Six 20mm high digits plus units and annunciators. LED backlight
Setup and Calibration	Full digital with visual prompting in plain messages
Digital Filter	Sliding window average from 0.1 second to 4.0 seconds
Zero Range	Adjustable from $\pm$ 2% to $\pm$ 20% of full capacity
<b>POWER INPUT</b>	
Standard	12-24 VDC (2.5 VA max)
AC	AC plug pack: 110/240 VAC 50/60 Hz in – 12 VDC 0.5A out



Procon Engineering's policy is one of continuous product enhancement.

We therefore reserve the right to incorporate technical modifications without prior notification. E&OE.

Issue No: 2018-01

Block 4, Units 2 & 3  
 Vestry Estate  
 Sevenoaks, Kent, TN14 5EL

Tel: 01732 781300  
 Fax: 01732 781311  
 web site: [www.proconeng.com](http://www.proconeng.com)

