



Procon Engineering Ltd

(Incorporating: Defiant - Negretti - Inflo - Lintvalve)



Type EP50 “Proweigher” Resometric Beltweigher Controller

digital resometric input

5 digit LED & 2 x 20 character LCD displays: selectable for live weight, flow rate, and totalised values

tachometer input for precise measurement of actual belt speed

optional outputs of live weight, flow rate, and totalised values

optimised to maximise the resometric beltweigher input

belt speed control, and batch control

two serial communication ports – supporting modbus & profibus etc.

dynamic zero compensation facility

The EP50 Proweigher Beltweigher controller is the latest in a long line of dedicated controllers from Procon, used for demanding Beltweighing applications in the harshest environments.

The EP50 is equipped with modern electronics for field bus connections.

As opposed to Analogue Load Cell Beltweighing systems, the Procon/Inflo Digital Beltweigher has no moving parts. At the heart of the scale is the Digital Resometric Force Transducer that provides unequalled levels of measurement performance that are repeatable for many years. The resonant frequency changes in proportion to the applied load passing over the carriage rollers, this change in frequency is processed by the electronics and combined with the belt travel speed (as measured by the Tachometer) provides an accurate weight reading per unit time.

A very powerful controller, housed in a compact enclosure with a sealed IP65 front panel, ensuring High performance combined with long-term repeatability.

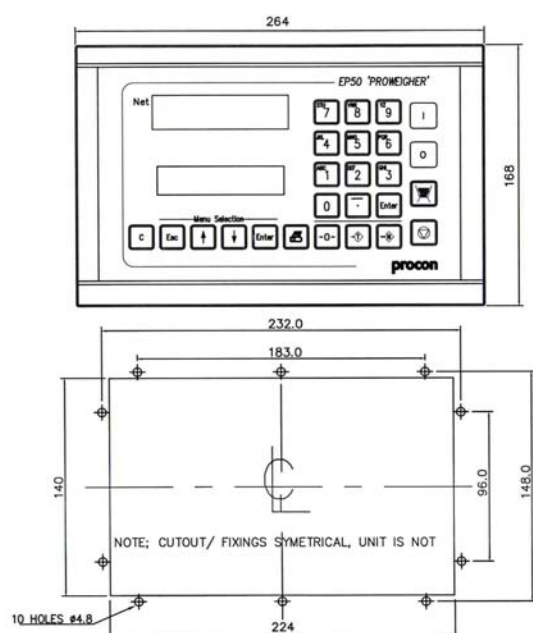
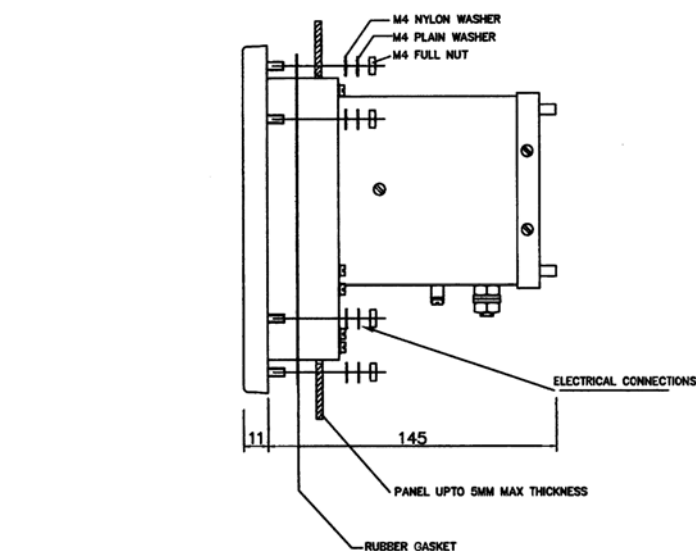
Also suitable for the upgrade of existing Procon/Inflo Beltweighing installation/applications.

technical specification sheet

Type EP50 "Proweigher" Resometric Beltweigher Controller

SPECIFICATION

Mains supply:	115/230 Vac + 10% - 15% @ 50/60Hz 50VA nom.
Resonator input:	From Beltscale weighbox – uses special inbuilt circuit.
Tachometer input:	Tachometer – uses special inbuilt circuit.
Optional auxilliary input:	0 to 10V or 4 to 20mA.
Serial interface port 1:	RS232.
Serial interface port 2:	RS232 or RS485 2 wire/4wire (software configured). Includes outputs for live weight, flow rate, and totalised values.
In-built digital inputs:	2 x opto isolated 12 to 30 Vdc (with wetting voltage).
Standard outputs:	5 plus watchdog/open collector or relay option.
Optional analogue output:	0 - 10V/4 - 20mA/0-20mA, 12 bit – isolated. Includes feed rate control.
Primary display:	5 digit LED 14.2 mm high.
Programming display:	Backlit dot matrix LCD display with LED backlighting.
Keyboard:	Polycarbonate overlay with tactile keyswitches.
Environmental:	Operating temperature range – 10 to 40 degrees C.
Sealing:	IP65 (front panel only).
Weight	3.5 kg.



Procon Engineering's policy is one of continuous product enhancement. We therefore reserve the right to incorporate technical modifications without prior notification.

Procon Engineering Ltd
 Vestry Estate
 Sevenoaks
 Kent, UK
 TN14 5EL

tel: +44 (0)1732 781300
 fax: +44 (0)1732 781311
 e-mail: sales@proconeng.com
 web site: www.proconeng.com

